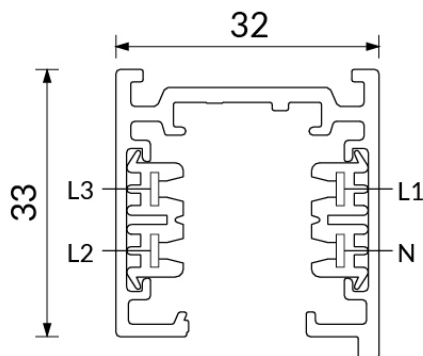
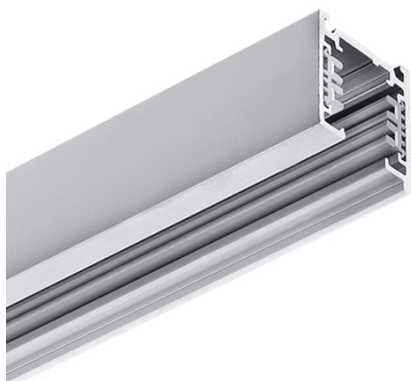



EUROSTANDARD TRACK

ON/OFF three-phase track



CODE		FLUX	SIZE	CERTIFICATIONS
15AA2			2mt	CE IP 20

Specifications

- The conductors are integrated in the track by means of rigid extruded profile made from insulating material guaranteeing high dielectric strength.
 - The 3 separate circuits consisting of 3 phase conductors and a common neutral allow for 3 lighting configurations to be switched individually.
- The 3-phase supply allows for an overall loading of 16 A (10500 VA) which can be divided among the 3 circuits (3x3500 VA).
- The earth positioned on the side leads to an asymmetrical structure of the track. As a consequence couplers must be selected carefully.

Body

Manufactured from die-cast aluminum.

Legal references

In compliance with the safety standards UNI EN 12464-1 (lighting for working places).

Wiring

RE: Built-in wiring 230-240V/50-60Hz with power factor >0.97.